
About Us

-
-
-
-

PRODUCT CERTIFICATION



VALUE: RESPECT

- Responsible
- Empathetic
- Self-Motivated
- Passionate
- Efficient
- Consistent
- Thoughtful

MANAGEMENT CERTIFICATION

- ISO 9001:2015
- ISO 14001:2015
- ISO 10012:2003
- ISO 45001:2018
- GB/T29490-2013

Quality Guarantee



Strict IEC Standard

- 4-fold thermal cycling test in acc. with IEC standard we conduct at least 200 cycles.
- 4-fold damp heat test in acc. with IEC standard we conduct at least 1,000 hours.
- 4-fold humidity freeze test in acc. with IEC standard we conduct at least 10 hours.
- 10-fold PID free test in acc. with IEC standard we pass 96 hrs@650C-85%RH.

Stringent Quality Assurance in Production to Ensure Consistency

- 100 % Electro Luminescence Test Before and After Lamination.
- 100% “zero” Micro Crack Monitoring and Optimal Test Before Shipment.
- Daily Test of Grounding Behavior.
- Daily Welt Leakage Testing.

Cutting Edge Technology LED Chips Encapsulation

- Self-supply quality controlled LEDs insures longer lifetime of luminare.
- Flexible and quick supply of LEDs towards different project requirements.



HIGHLIGHT

HIGH EFFICIENT SOLAR PANEL

Maximum power generation

100% Solar Power.Sustainable o-grid energy.



HIGH EFFICIENT PV MODULE

High conversion efficiency due to top quality wafers and advanced cell technology.



ORIGINAL INTEGRATED DESIGN

LED, solar and battery are all in one unit. Easy installation.



HIGH TOUGHNESS TEMPERED GLASS

High transparent self-clean tempered glass to increase the light adoption and effectively reduce the power loss which is caused by dust.



SUPERIOR WEAK SUN PERFORMANCE

Advanced glass and solar cell surface texturing allow for excellent performance in low-light environments.

HIGH LUMINOUS EFFICIENCY LED MODULE

Creative modular design and exceptional heat dissipation

Combined with the outstanding heat dissipation design, the pure aluminum lamp base with sealed lens makes the lighting more effective and aids in prolonged life span of the LED.



Using Samsung 2835 LEDs



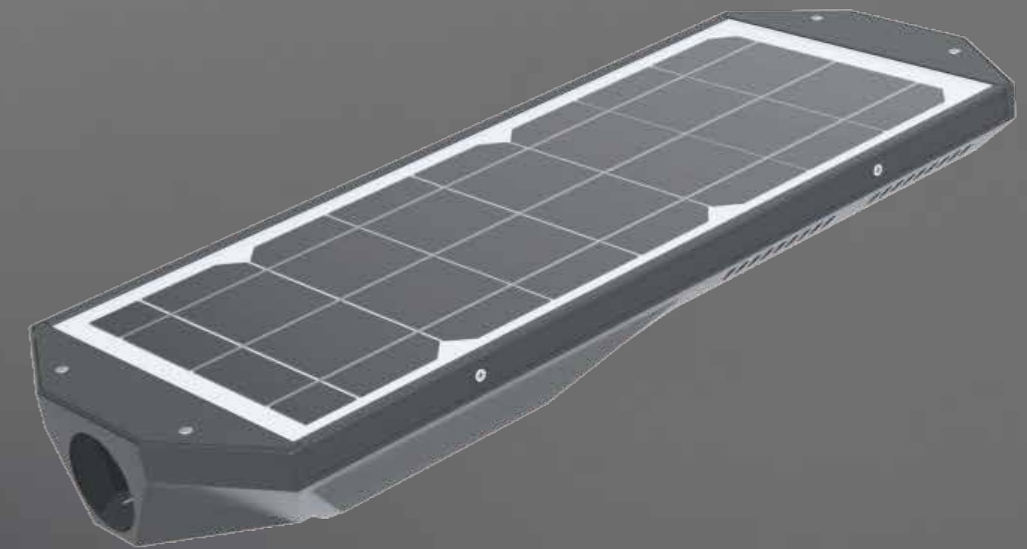
Prolong Lifetime >50000 hours



-20° C-60° C Operating Temperature



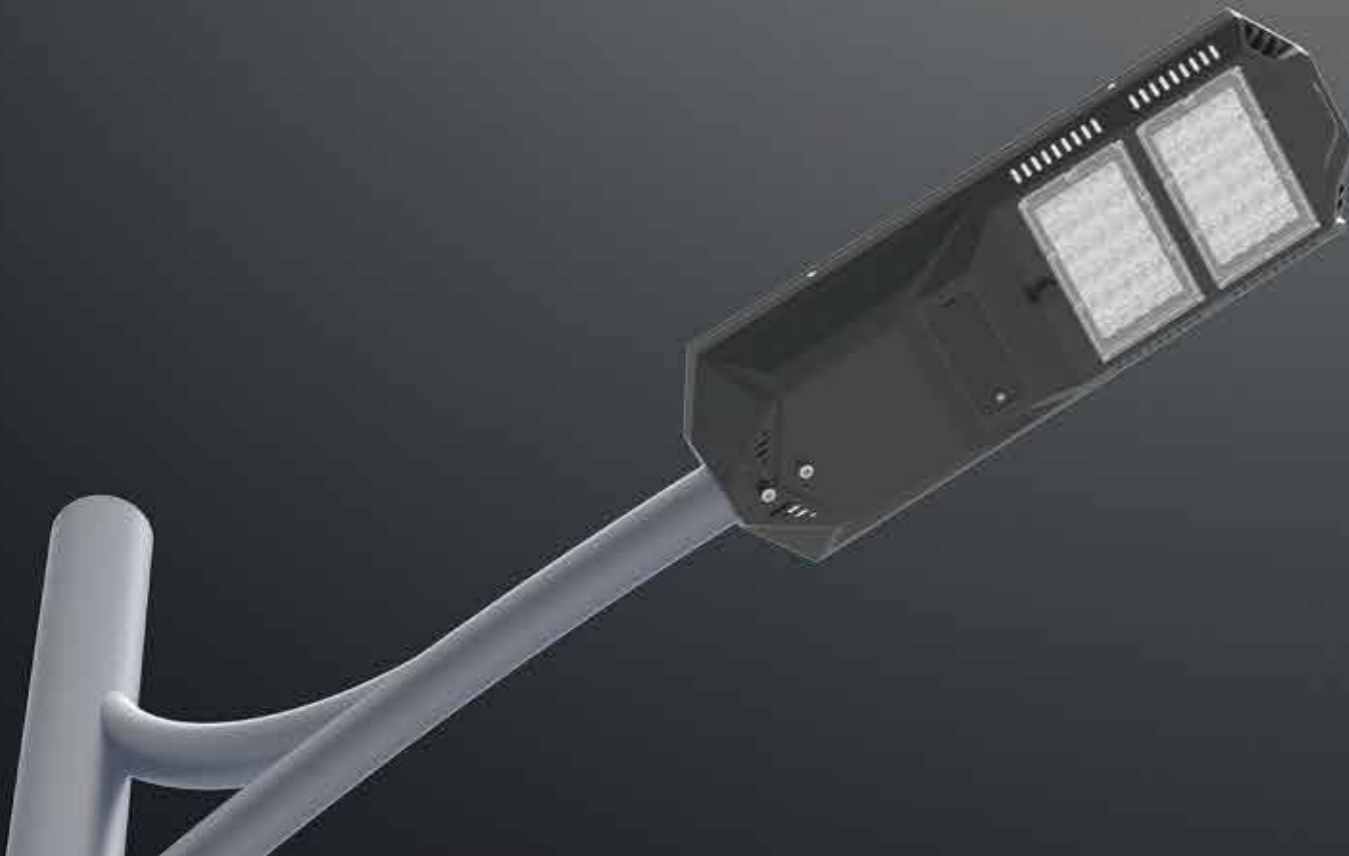
Fast cool-down Quality aluminum PCB+Aluminum Housing



PRECISE LIGHT DISTRIBUTION LENS

Maximum optical output

Using professional optical design software, through calculation and repeated testing, so as to achieve more accurate light distribution.



HIGHLIGHT

TRANSFORMER INTEGRATED SERIES

Creative All-In-One Solar Intelligent LED Light

TRANSFORMER Integrated Series is fully solar powered intelligent all-in-one piece light. Creative All-In-One piece design integrates LED light, solar panel, battery in one unit. No cables are required. Installation is quick and simple. Installation cost and electricity bill are saved.



HIGH QUALITY EXTRUDING ALLUMINUM HOUSING

Ik08 impact resistance, excellent heat dissipation, strong anti-corrosion, elegant appearance, anti-typhoon up to level 14.



SAMSUNG HIGH LUMINOUS EFFICIENCY LED

Light modules utilizes high luminous efficiency Samsung LED and unique road lighting lens.



REMOTE CONTROLLING

Intelligent remote controlling is optional for multiple lighting time management. Enhancing its adaptability in different weather conditions.



ORIGINAL INTEGRATED DESIGN

LED, solar and battery are all in one unit. Easy installation.

PREMIUM QUALITY LIFEP04 BATTERY WITH BMS



Over current



Over voltage



Over charge



Over discharge



Over temperature



Over load

INTELLIGENT MANAGEMENT SYSTEM

Programmable Management System for multiple application



RECHARGING INPUT

DC recharging input is designed for sellers. In a case of empty energy in battery, sellers can recharge it by DC adapter easily. Placing all lights under the sun to recharge the battery become history.

INTELLIGENT MANAGEMENT

Programmable time management remote control improve adaptability in different weather in different weather condition.



AVAILABLE CUSTOMIZATION

Customize control method and time setting is available. More flexibility.

SPECIFICATIONS

TRANSFORMER INTEGRATED SERIES



Model: LY03A



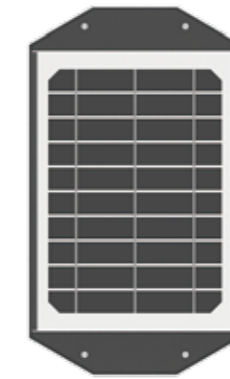
Model: LY03B



Model: LY03C

SPECIFICATIONS

TRANSFORMER INTEGRATED SERIES



Model:LY03A

Optical Parameters

LED rated power (max):	5W
Efficiency:	170 lm/W
CCT:	3000-6500K
CRI:	≥80
Beam angle:	0°x140° / 70°x140°(Optional)
IP Rating:	IP65

Structural Parameters

PVsize:	257x184x4.5mm
Product size:	328x189x65mm
Front side glass:	3.2mm transparent anti-reflection coating tempered glass
material:	Aluminum

Solar Panel Parameters

Nominal power:	6.3W
Voltage at Pmax (vmp):	5V
Current at Pmax (Imp):	1.25A

Energy Storage Parameters

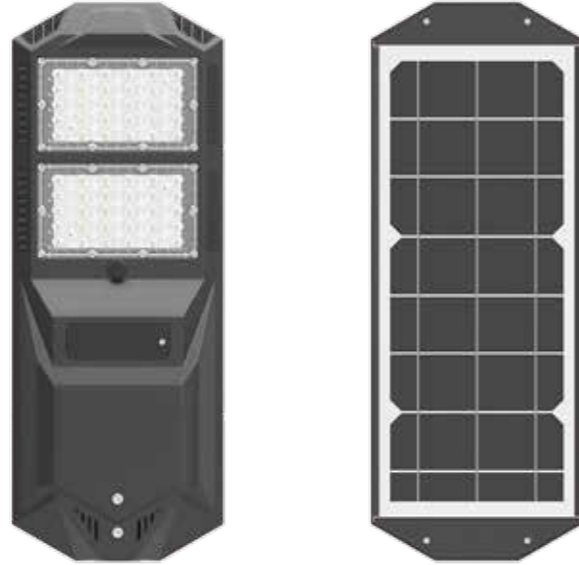
Battery type:	LifePo4
Nominal capacity:	12Ah
Nominal voltage:	3.2V

Other Parameters

Storage temperature:	-20°C~60°C
Operation temperature:	0°C~50°C
Sensor:	No
Height of installation:	2~4m
Diameter of pole:	40mm

SPECIFICATIONS

TRANSFORMER INTEGRATED SERIES



Model:LY03B

Optical Parameters

LED rated power (max):	10W
Efficiency:	170 lm/W
CCT:	3000-6500K
CRI:	≥80
Beam angle:	50°x140° / 70°x140°(Optional)
IP Rating:	IP65

Structural Parameters

PVsize:	428x184x4.5mm
Product size:	499x189x65mm
Front side glass:	3.2mm transparent anti-reflection coating tempered glass
material:	Aluminum

Solar Panel Parameters

Nominal power:	12.6W
Voltage at Pmax (vmp):	5V
Current at Pmax (Imp):	2.50A

Energy Storage Parameters

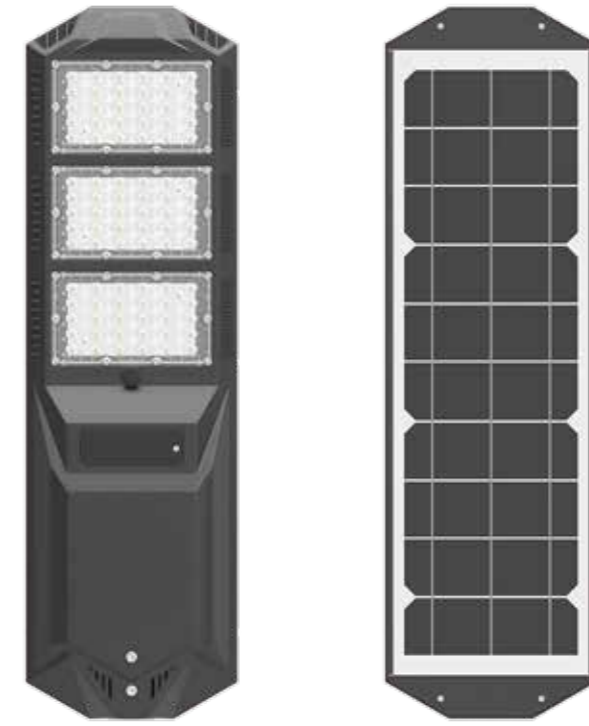
Battery type:	LifePo4
Nominal capacity:	24Ah
Nominal voltage:	3.2V

Other Parameters

Storage temperature:	-20°C~60°C
Operation temperature:	0°C~50°C
Sensor:	No
Height of installation:	4~5m
Diameter of pole:	40mm

SPECIFICATIONS

TRANSFORMER INTEGRATED SERIES



Model:LY03C

Optical Parameters

LED rated power (max):	15W
Efficiency:	170 lm/W
CCT:	3000-6500K
CRI:	≥80
Beam angle:	50°x140° / 70°x140°(Optional)
IP Rating:	IP65

Structural Parameters

PVsize:	565x184x4.5mm
Product size:	636x189x65mm
Front side glass:	3.2mm transparent anti-reflection coating tempered glass
material:	Aluminum

Solar Panel Parameters

Nominal power:	16.6W
Voltage at Pmax (vmp):	5V
Current at Pmax (Imp):	3.33A

Energy Storage Parameters

Battery type:	LifePo4
Nominal capacity:	36Ah
Nominal voltage:	3.2V

Other Parameters

Storage temperature:	-20°C~60°C
Operation temperature:	0°C~50°C
Sensor:	No
Height of installation:	5~6m
Diameter of pole:	40mm

HIGHLIGHT

PREMIUM ALL-IN-ONE SOLAR LIGHTING SOLUTION

LED+PV+Battery are all in one piece with intelligent control system to optimize its maintainence, installation and daily operation.



SUPREME QUALITY LED MODULE

LED modules utilizes super high luminous efficiency Philips LED up to 150lm/W. Creative and elegant low glare lens distribute the light evenly and smoothly.

PIR SENSOR

PIR sensor detects the human movement and provide high brightness when it is needed.

PATENTED PRESSURE-REGULATING DEVICE

The pressure and heat in battery box is managed by this valve to optimize battery operating environment and the lifetime.

HIGH EFFICIENT SOLAR PANEL

Maximum power generation

100% Solar Power.Sustainable off-grid energy



HIGH EFFICIENCY MONO SILICONE SOLAR PANEL

Class A high efficiency Mono silicone solar module. Up to 18%. Strong performance insures sufficient power for light.

LITHIUM BATTERY PACK WITH BMS

High capacity Lithium Battery Pack with battery management system. Extreme low temperature battery is available.

ADC12 ALLUMINUM HOUSING

Ik10 impact resistance, excellent heat dissipation, strong anti-corrosion,elegant appearance, anti-typhoon up to level 16.

SPECIFICATIONS

INTELLIGENT INTEGRATED SOLAR LIGHT



Model:LY01A

Optical Parameters

LED rated power (max):	15W
Efficiency:	160 lm/W
CCT:	3000-6000K
CRI:	≥70
Beam angle:	60°x120°(Optional)
IP Rating:	IP65

Structural Parameters

PVsize:	525x330x4.5mm
Product size:	615x357x128mm
Front side glass:	3.2mm transparent anti-reflection coating tempered glass
material:	Aluminum

Solar Panel Parameters

Nominal power:	30W
Voltage at Pmax (vmp):	18V
Current at Pmax (Imp):	1.56A

Energy Storage Parameters

Battery type:	LifePo4
Nominal capacity:	307Wh
Nominal voltage:	12.8V

Other Parameters

Storage temperature:	-20°C~60°C
Operation temperature:	-20°C~50°C
Sensor:	PIR sensor
Height of installation:	4~6m
Diameter of pole:	60mm

SPECIFICATIONS

INTELLIGENT INTEGRATED SOLAR LIGHT



Model:LY01B

Optical Parameters

LED rated power (max):	30W
Efficiency:	160 lm/W
CCT:	3000-6000K
CRI:	≥70
Beam angle:	60°x120°(Optional)
IP Rating:	IP65

Structural Parameters

PVsize:	818x490x4.5mm
Product size:	846x517x182mm
Front side glass:	3.2mm transparent anti-reflection coating tempered glass
material:	Aluminum

Solar Panel Parameters

Nominal power:	70W
Voltage at Pmax (vmp):	18V
Current at Pmax (Imp):	3.80A

Energy Storage Parameters

Battery type:	LifePo4
Nominal capacity:	640Wh
Nominal voltage:	12.8V

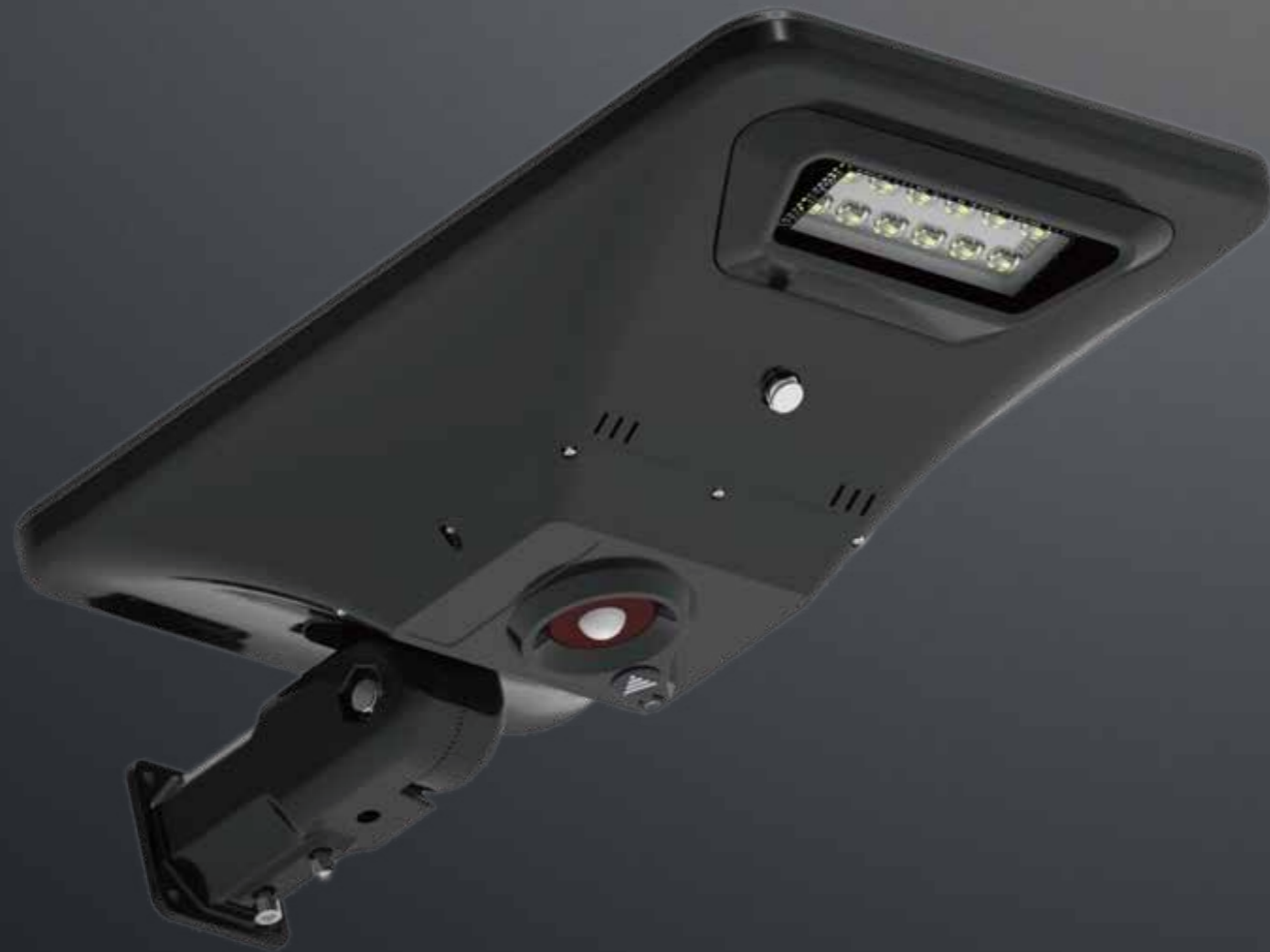
Other Parameters

Storage temperature:	-20°C~60°C
Operation temperature:	-20°C~50°C
Sensor:	PIR sensor
Height of installation:	6~8m
Diameter of pole:	60mm

HIGHLIGHT

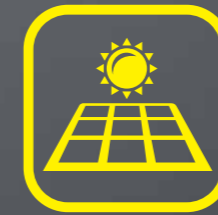
HYBRID AC-SOLAR POWER SOLUTION

The system is connected to utility grid. AC Power works when battery energy is low.



Intelligent Control System

Automatic switch of Solar-Grid. 365 Days Lighting



30W Mono PV Module



SRNE Hybrid Solar Controller
Intelligent Programmable Control



In-built Lithium Battery
LFP Battery 2000+ times cycle

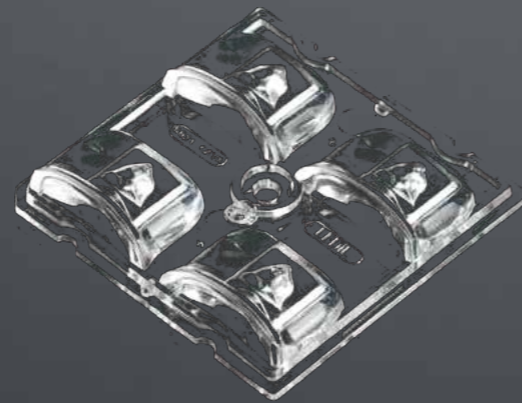


Meanwell LED Driver
Reliable AC Power Source

LEDIL OPTICS



LEDiL introduces a new optic solution to the growing STRADA-2X2 family. STRADA-2X2-SCL is designed to give a very wide beam with the peak reaching as far as 75 degrees. The lens is designed to maintain its wide beam even with the flat cover glass attached. STRADA-2X2-SCL can illuminate the roads with distance from pole to pole being up to 10 times the mounting height. With special attention given to minimize light spillage to the house side and meeting the requirements of the European S-class STRADA-2X2-SCL is the perfect companion to take your street lighting to the next level.



FEATURES

- Very wide beam pattern falling between IESNA Type II and Type III distributions
- Designed for European S-class
- Special attention has been given to minimize light spilling to the house side
- Compatible with LEDs up to 5050 sized packages*

TYPICAL APPLICATIONS

- Street and parking lot lighting
- Pedestrian lighting
- General road lighting
- Outdoor lighting

SPEC SHEET

Model No	LY01A-Hybrid
LEDs	12 X Philips LUXEON 5050
Max Power	15W-Solar, 21W-AC
Optics	Ledile Strada-2X2 Series
Efficacy	150-160 LM/W
CRI	70Ra
CCT	3000K,4000K,5700K
PV Module	30W 18V Mono
Battery	LFP 32700. 18Ah 12.8V-230.4WH
Driver	Meanwell APV-35-12
Controller	SRNE Hybrid
Sensor	PIR Sensor
Housing Material	Die-casting Aluminum
Housing Color	Black/White/Customized
Tilt Angle	-5°~ +90°
Pole Mount	≤ Ø60mm
Installation Height	≤ 8m

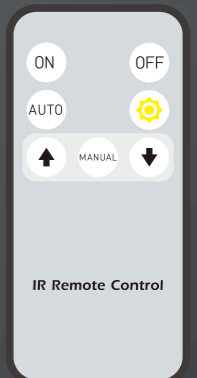
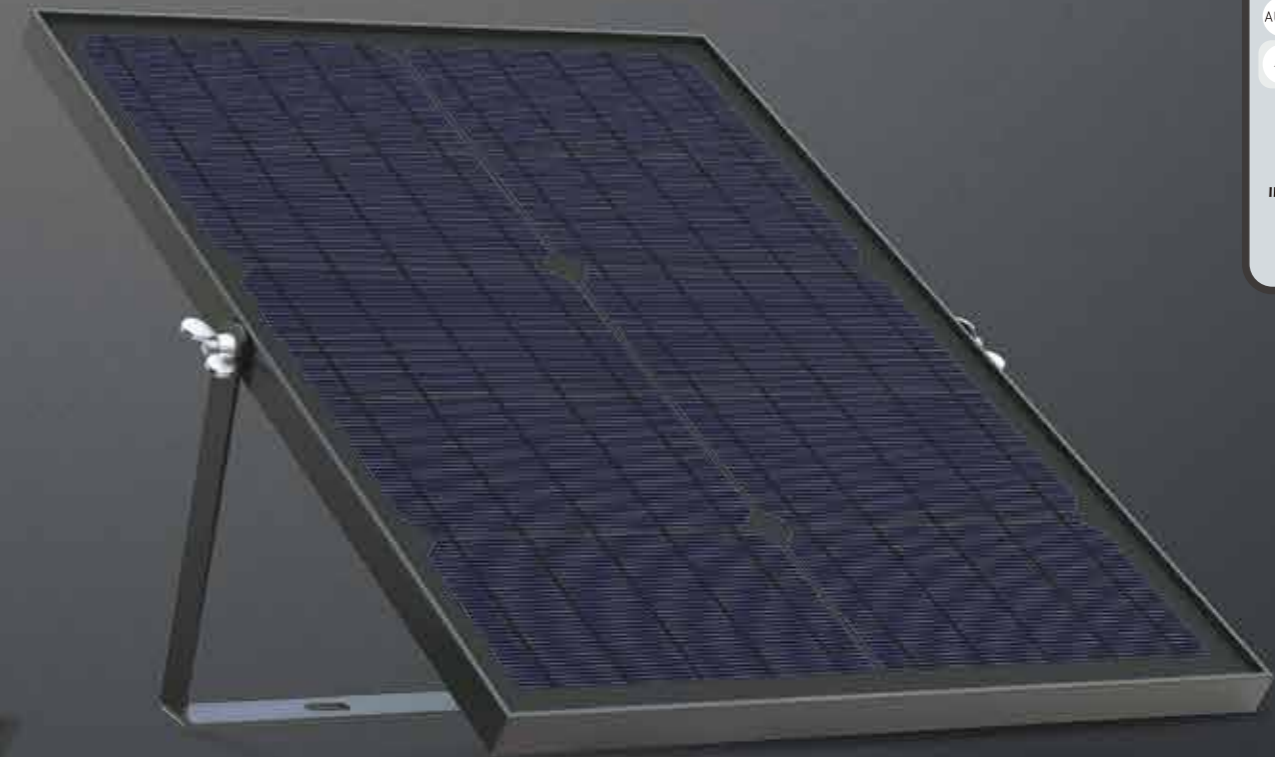
HIGHLIGHT

SOLAR FLOOD LIGHT-NEW GERNERATION

Original-design, Upfront Technology
Ideal solution for sustainable flood Lighting

REMOTE CONTROLLING

Remote controller is equipped to improve its adaptability in different weather condition.



5050 HIGH LUMINOUS EFFICIENCY LED

5050 LEDs is the most efficient LEDs so far. Its efficiency is 20-30% higher than 2835 and 3030.

HIGH QUALITY DIE CASTING ALLUMINUM HOUSING

Ik08 impact resistance, excellent heat dissipation, strong anti-corrosion, elegant appearance.

100% SOLAR

100% Solar Powered. Ideal green energy solution for outdoor operation.

PLUG&PLAY

Tool free installation and easy maintainence.

SUPREME QUALITY BATTERY

Grade A 32700 LFP battery cell. Maximum 2000 times cycle.

BATTERY ENERGY INDICATOR

5 LED lights indicate 20%-40%-60%-80%-100% battery energy.

IP67

Creative water&dust proof structure for outdoor long time operation.

MAX 5 YEARS WARRANTY

Standard Warranty is 3 years. Premium Warranty 5 years is optional.

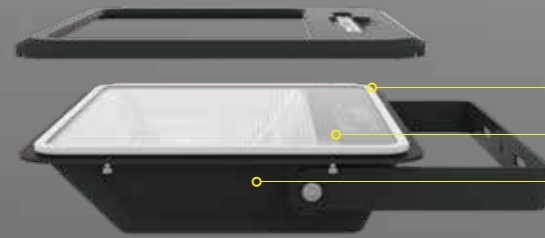
HIGHLIGHT

ROBUST ORIGINAL DESIGN

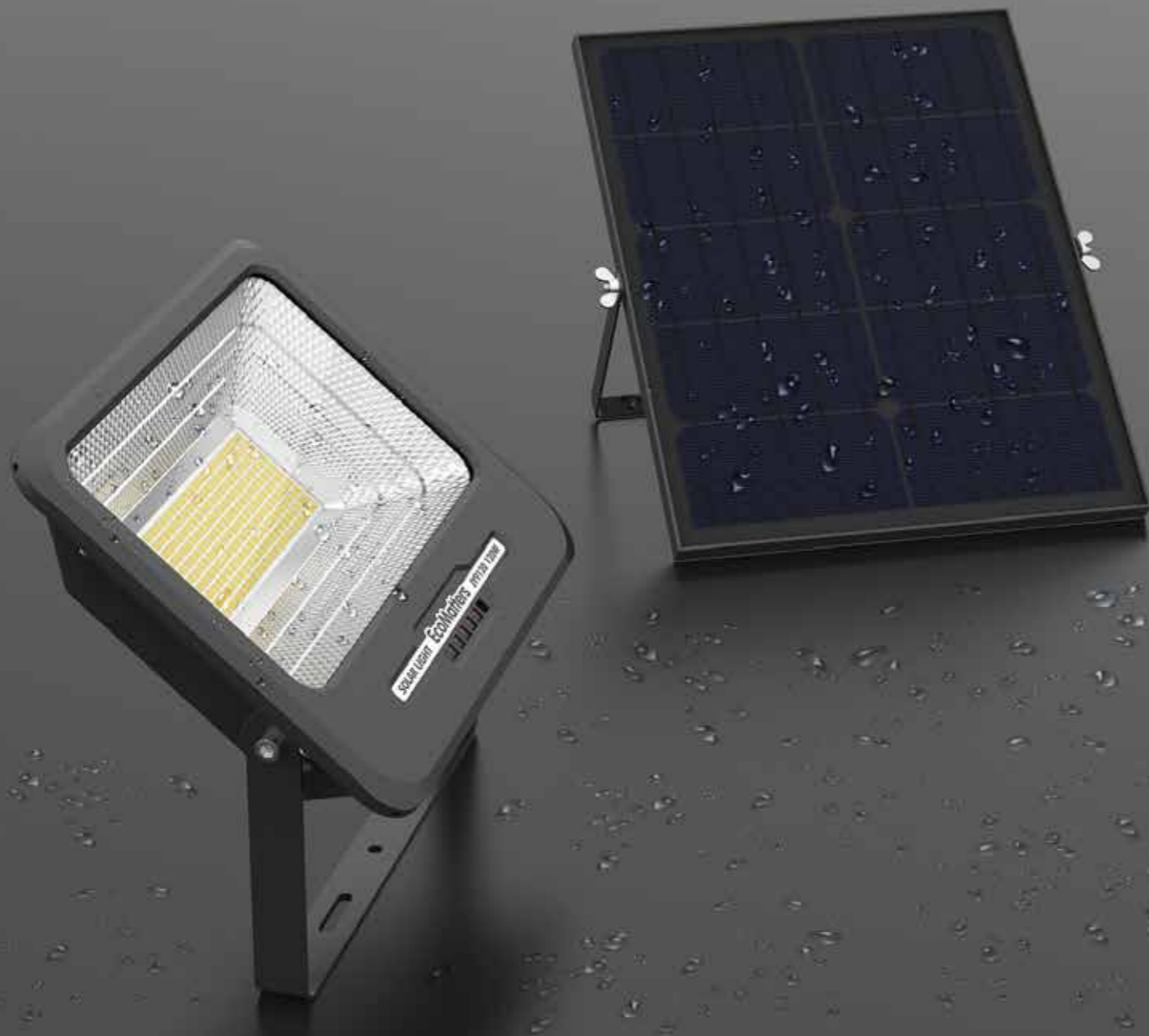
Strong and durable IP67 water proof structure

Complete with inbuilt LED and battery module. The light has been developed as an ideal renewable solution for many exterior applications.

These include installations requiring total protection from dirt and dust, or protection from low pressure water penetration such as sprinklers or water spray.



- Waterproof silicone ring
- High strength tempered glass
- Die casting aluminum housing



SPECIFICATIONS

SOLAR FLOOD LIGHT-NEW GENERATION -JY9930



Model:JY9930

Optical Parameters

LED rated power (max):	30W
Efficiency:	140 lm/W
CCT:	3000-6500K
CRI:	≥70
Beam angle:	90°
IP Rating:	IP65

Structural Parameters

PVsize:	350x195x17mm
Product size:	244x248x74mm
Front side glass:	3.2mm transparent anti-reflection coating tempered glass
material:	Aluminum

Solar Panel Parameters

Nominal power:	10W
Voltage at Pmax (vmp):	5V
Current at Pmax (Imp):	2.00A

Energy Storage Parameters

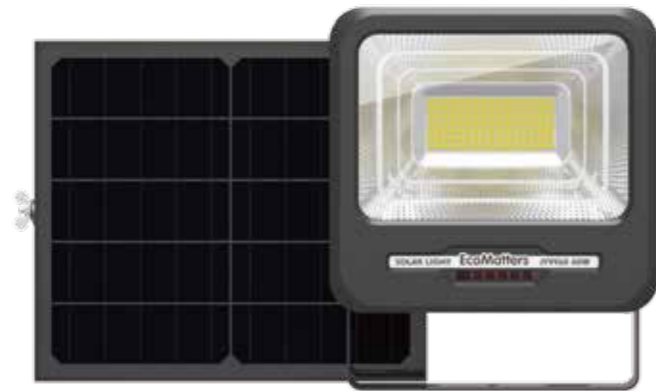
Battery type:	LifePo4
Nominal capacity:	12Ah
Nominal voltage:	3.2V

Other Parameters

Storage temperature:	-20°C~60°C
Operation temperature:	-20°C~50°C
Sensor:	No
Installation:	Surface mount bracket

SPECIFICATIONS

SOLAR FLOOD LIGHT-NEW GENERATION -JY9960



Model:JY9960

Optical Parameters

LED rated power (max):	60W
Efficiency:	140 lm/W
CCT:	3000-6500K
CRI:	≥70
Beam angle:	90°
IP Rating:	IP65

Structural Parameters

PVsize:	350x300x17mm
Product size:	282x261x74mm
Front side glass:	3.2mm transparent anti-reflection coating tempered glass
material:	Aluminum

Solar Panel Parameters

Nominal power:	17W
Voltage at Pmax (vmp):	5V
Current at Pmax (Imp):	3.40A

Energy Storage Parameters

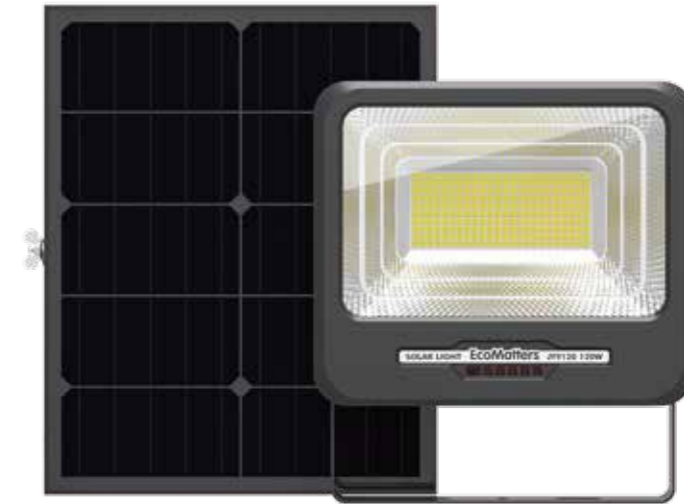
Battery type:	LifePo4
Nominal capacity:	18Ah
Nominal voltage:	3.2V

Other Parameters

Storage temperature:	-20°C~60°C
Operation temperature:	-20°C~50°C
Sensor:	No
Installation:	Surface mount bracket

SPECIFICATIONS

SOLAR FLOOD LIGHT-NEW GENERATION -JY9120



Model:JY9120

Optical Parameters

LED rated power (max):	120W
Efficiency:	140 lm/W
CCT:	3000-6500K
CRI:	≥70
Beam angle:	90°
IP Rating:	IP65

Structural Parameters

PVsize:	350x430x17mm
Product size:	326x277x74mm
Front side glass:	3.2mm transparent anti-reflection coating tempered glass
material:	Aluminum

Solar Panel Parameters

Nominal power:	26W
Voltage at Pmax (vmp):	5V
Current at Pmax (Imp):	5.20A

Energy Storage Parameters

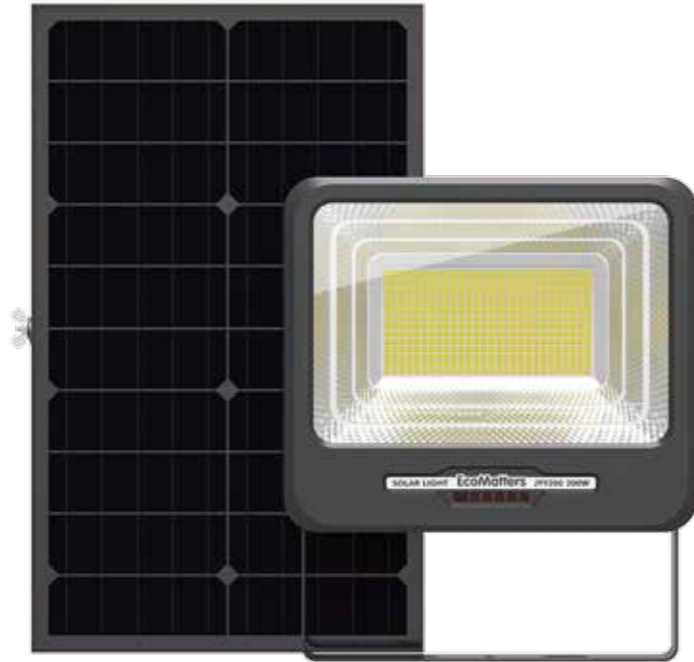
Battery type:	LifePo4
Nominal capacity:	24Ah
Nominal voltage:	3.2V

Other Parameters

Storage temperature:	-20°C~60°C
Operation temperature:	-20°C~50°C
Sensor:	No
Installation:	Surface mount bracket

SPECIFICATIONS

SOLAR FLOOD LIGHT-NEW GENERATION -JY9200



Model: JY9200

Optical Parameters

LED rated power (max):	200W
Efficiency:	140 lm/W
CCT:	3000-6500K
CRI:	≥70
Beam angle:	90°
IP Rating:	IP65

Structural Parameters

PVsize:	350x570x17mm
Product size:	354x302x74mm
Front side glass:	3.2mm transparent anti-reflection coating tempered glass
material:	Aluminum

Solar Panel Parameters

Nominal power:	34W
Voltage at Pmax (vmp):	5V
Current at Pmax (Imp):	6.80A

Energy Storage Parameters

Battery type:	LifePo4
Nominal capacity:	30Ah
Nominal voltage:	3.2V

Other Parameters

Storage temperature:	-20°C~60°C
Operation temperature:	-20°C~50°C
Sensor:	No
Installation:	Surface mount bracket

SPECIFICATIONS

SOLAR FLOOD LIGHT-NEW GENERATION -JY9300



Model: JY9300

Optical Parameters

LED rated power (max):	300W
Efficiency:	140 lm/W
CCT:	3000-6500K
CRI:	≥70
Beam angle:	90°
IP Rating:	IP65

Structural Parameters

PVsize:	350x660x17mm
Product size:	406x327x74mm
Front side glass:	3.2mm transparent anti-reflection coating tempered glass
material:	Aluminum

Solar Panel Parameters

Nominal power:	40W
Voltage at Pmax (vmp):	5V
Current at Pmax (Imp):	8.00A

Energy Storage Parameters

Battery type:	LifePo4
Nominal capacity:	36Ah
Nominal voltage:	3.2V

Other Parameters

Storage temperature:	-20°C~60°C
Operation temperature:	-20°C~50°C
Sensor:	No
Installation:	Surface mount bracket

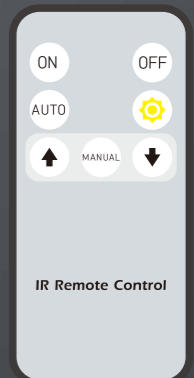
HIGHLIGHT

SOLAR FLOOD LIGHT-NEW GERNERATION

Original-design. Upfront Technology. Ideal solution for sustainable flood Lighting .

REMOTE CONTROLLING

Remote controller is equipped to improve its adaptability in different weather conditions.



2835 HIGH LUMINOUS EFFICIENCY LED

Cost effective durable 2835 LEDs provides high brightness lighting

HIGH QUALITY DIE CASTING ALLUMINUM HOUSING

1k08 impact resistance, excellent heat dissipation, strong anti-corrosion,elegant appearance.

100% SOLAR

100% Solar Powered. Ideal green energy solution for outdoor operation.

PLUG&PLAY

Tool free installation and easy maintainence.

SUPREME QUALITY BATTERY

Grade A 32700 LFP battery cell. Maximum 2000 times cycle.

BATTERY ENERGY INDICATOR

5 LED lights indicate 20%-40%-60%-80%-100% battery energy.

IP67

Creative water&dust proof structure for outdoor long time operation.

MAX 5 YEARS WARRANTY

Standard Warranty is 3 years. Premium Warranty 5 years is optional.

OPTIONAL

Portable Work Light

IP67 Compact handy design

Maximum 30 hours flood lighting.

Ideal outdoor lighting solution for outdoor task and construction.

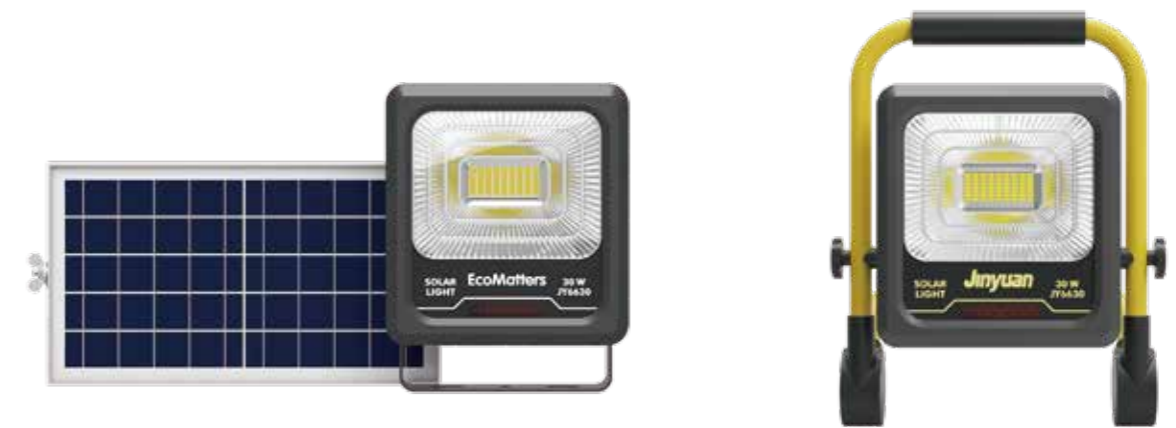
100+ hours RGB warning flash for road security.



SPECIFICATIONS

SOLAR FLOOD LIGHT-NEW GENERATION -JY6630

Optional



Model:JY6630

Optical Parameters

LED rated power (max):	30W
Efficiency:	140 lm/W
CCT:	3000-6500K
CRI:	≥70
Beam angle:	90°
IP Rating:	IP65

Structural Parameters

PVsize:	350x195x17mm
Product size:	266.82x207.6x71mm
Front side glass:	3.2mm transparent anti-reflection coating tempered glass
material:	Aluminum

Solar Panel Parameters

Nominal power:	10W
Voltage at Pmax (vmp):	5V
Current at Pmax (Imp):	2.00A

Energy Storage Parameters

Battery type:	LiFePo4
Nominal capacity:	12.5 Ah
Nominal voltage:	3.2V

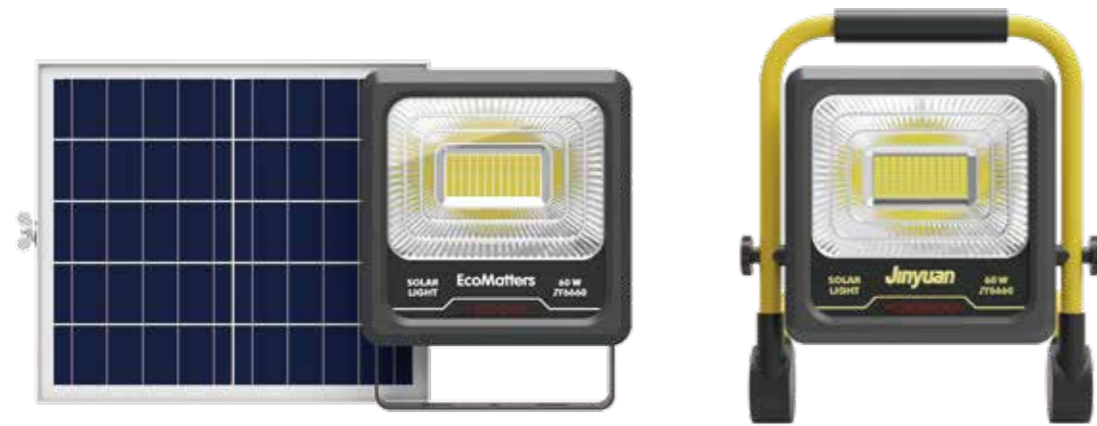
Other Parameters

Storage temperature:	-20°C~60°C
Operation temperature:	-20°C~50°C
Sensor:	No
Installation:	Surface mount bracket

SPECIFICATIONS

SOLAR FLOOD LIGHT-NEW GENERATION -JY6660

Optional



Model:JY6660

Optical Parameters

LED rated power (max):	60W
Efficiency:	140 lm/W
CCT:	3000-6500K
CRI:	≥70
Beam angle:	90°
IP Rating:	IP65

Structural Parameters

PVsize:	350x300x17mm
Product size:	293.8x230.7x71mm
Front side glass:	3.2mm transparent anti-reflection coating tempered glass
material:	Aluminum

Solar Panel Parameters

Nominal power:	16W
Voltage at Pmax (vmp):	5V
Current at Pmax (Imp):	3.40A

Energy Storage Parameters

Battery type:	LiFePo4
Nominal capacity:	18Ah
Nominal voltage:	3.2V

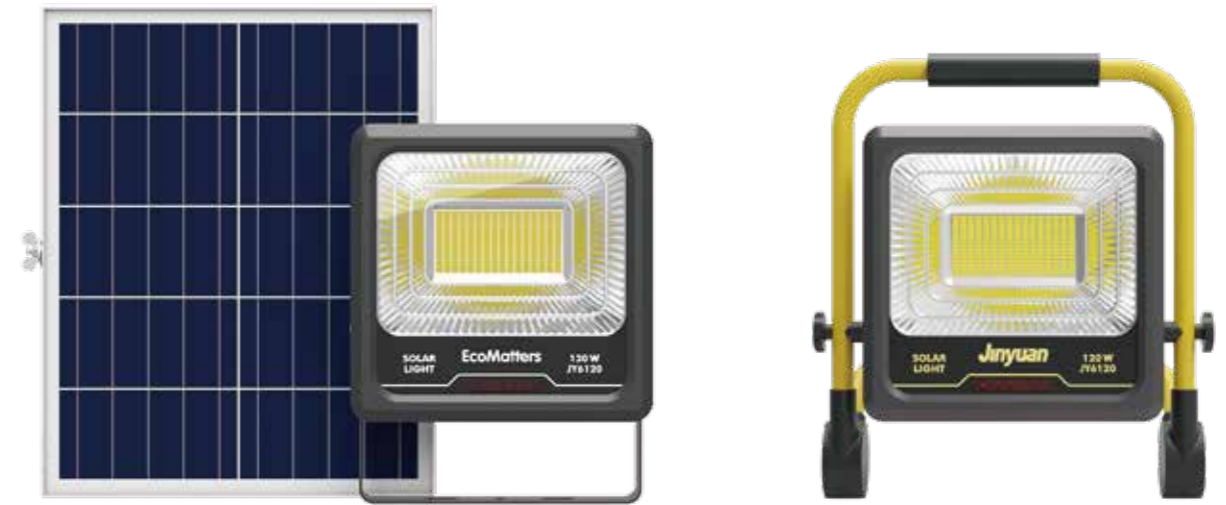
Other Parameters

Storage temperature:	-20°C~60°C
Operation temperature:	-20°C~50°C
Sensor:	No
Installation:	Surface mount bracket

SPECIFICATIONS

SOLAR FLOOD LIGHT-NEW GENERATION -JY6120

Optional



Model:JY6120

Optical Parameters

LED rated power (max):	120W
Efficiency:	140 lm/W
CCT:	3000-6500K
CRI:	≥70
Beam angle:	90°
IP Rating:	IP65

Structural Parameters

PVsize:	350x430x17mm
Product size:	326.8x258.3x71mm
Front side glass:	3.2mm transparent anti-reflection coating tempered glass
material:	Aluminum

Solar Panel Parameters

Nominal power:	24W
Voltage at Pmax (vmp):	5V
Current at Pmax (Imp):	5.20A

Energy Storage Parameters

Battery type:	LiFePo4
Nominal capacity:	24Ah
Nominal voltage:	3.2V

Other Parameters

Storage temperature:	-20°C~60°C
Operation temperature:	-20°C~50°C
Sensor:	No
Installation:	Surface mount bracket

SPECIFICATIONS

SOLAR FLOOD LIGHT-NEW GENERATION -JY6200

Optional



Model:JY6200

Optical Parameters

LED rated power (max):	200W
Efficiency:	140 lm/W
CCT:	3000-6500K
CRI:	≥70
Beam angle:	90°
IP Rating:	IP65

Structural Parameters

PVsize:	350x570x17mm
Product size:	356.3x292.4x71mm
Front side glass:	3.2mm transparent anti-reflection coating tempered glass
material:	Aluminum

Solar Panel Parameters

Nominal power:	32W
Voltage at Pmax (vmp):	5V
Current at Pmax (Imp):	6.80A

Energy Storage Parameters

Battery type:	LiFePo4
Nominal capacity:	30Ah
Nominal voltage:	3.2V

Other Parameters

Storage temperature:	-20°C~60°C
Operation temperature:	-20°C~50°C
Sensor:	No
Installation:	Surface mount bracket

SPECIFICATIONS

SOLAR FLOOD LIGHT-NEW GENERATION -JY6300

Optional



Model:JY6300

Optical Parameters

LED rated power (max):	300W
Efficiency:	140 lm/W
CCT:	3000-6500K
CRI:	≥70
Beam angle:	90°
IP Rating:	IP65

Structural Parameters

PVsize:	350x660x17mm
Product size:	394.2x320.4x71mm
Front side glass:	3.2mm transparent anti-reflection coating tempered glass
material:	Aluminum

Solar Panel Parameters

Nominal power:	38W
Voltage at Pmax (vmp):	5V
Current at Pmax (Imp):	8.00A

Energy Storage Parameters

Battery type:	LiFePo4
Nominal capacity:	36Ah
Nominal voltage:	3.2V

Other Parameters

Storage temperature:	-20°C~60°C
Operation temperature:	-20°C~50°C
Sensor:	No
Installation:	Surface mount bracket

HIGHLIGHT

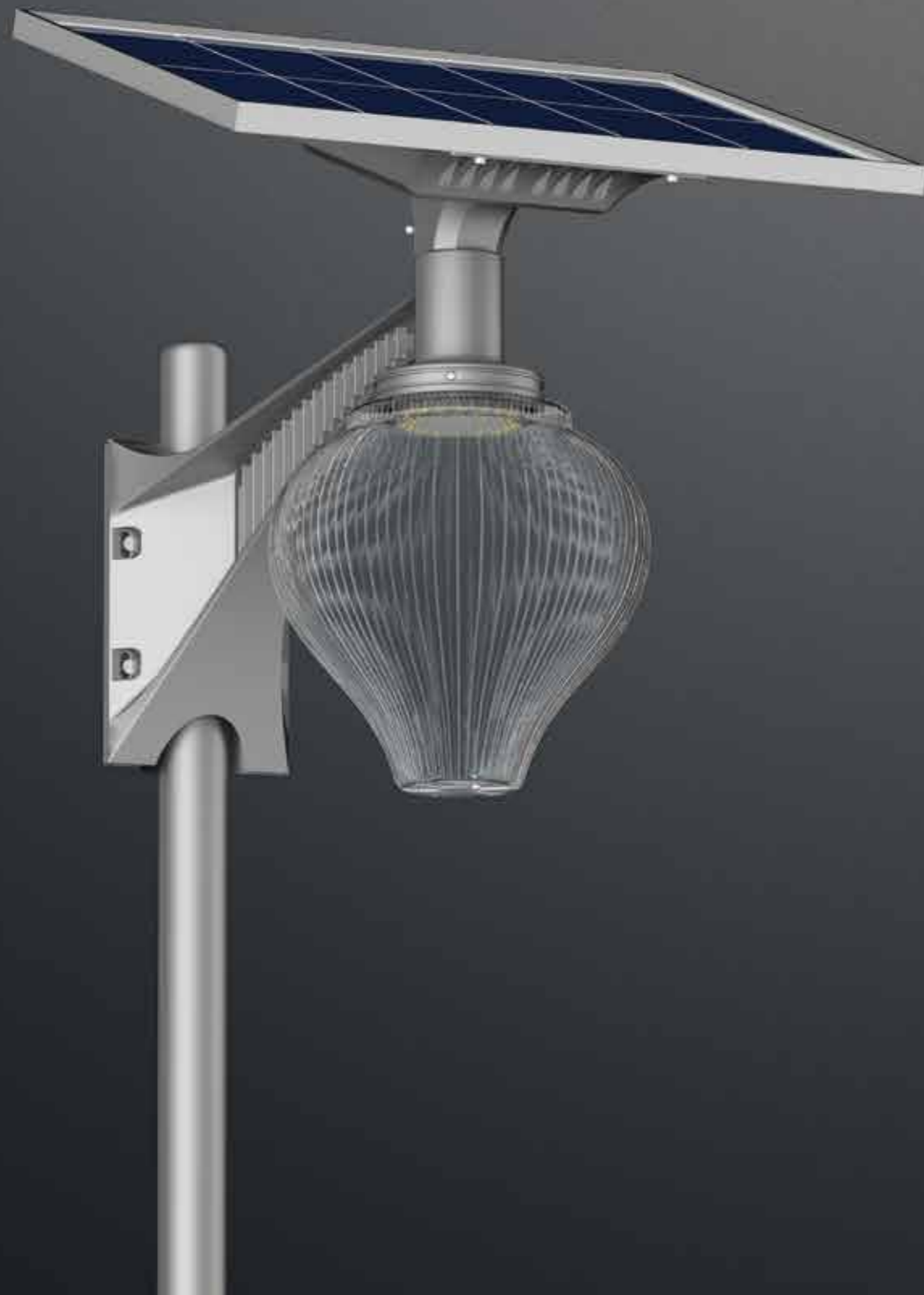
ORIGINAL DESIGN SOLAR GARDEN LIGHT

Solar Garden Light TB Series is designed for lighting up garden and areas where need circular wide light Distribution.

LIGHT YOUR GARDEN BY SOLAR POWER

Wall/Pole Mount Optional for quick installation

100% Solar Power.Sustainable off-grid energy



2835 HIGH LUMINOUS SAMSUNG LED

Samsung super high efficiency LED chips. More efficiency lighting,more energy saving.



HIGH QUALITY DIE CASTING ALLUMINIUM HOUSING

Ik08 impact resistance, excellent heat dissipation, Strong anti-corrosion,elegant appearance.



HIGH EFFICIENCY POLY SILICONE SOLAR PANEL

Class A high efficiency poly silicone solar module. Up to 18%. Strong performance insures sufficient power for light.



LITHIUM BATTERY PACK WITH BMS

High capacity lithium battery pack with battery management system. Extreme low temperature battery is available.

SPECIFICATIONS

SOLAR GARDEN LIGHT-ORIGINAL DESIGN-TB04



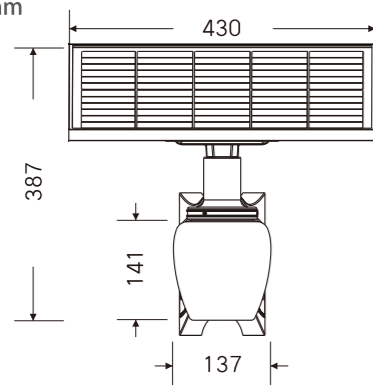
Model:TB04

Optical Parameters

LED rated power (max):	15W
Efficiency:	140 lm/W
CCT:	3000-6500K
CRI:	≥70
Beam angle:	90°
IP Rating:	IP65

Structural Parameters

Unit:mm



Solar Panel Parameters

Nominal power:	18W
Voltage at Pmax (vmp):	5V
Current at Pmax (Imp):	3.60A

Energy Storage Parameters

Battery type:	Lifepo4
Nominal capacity:	12Ah
Nominal voltage:	3.2V

Other Parameters

Storage temperature:	-20°C~60°C
Operation temperature:	-20°C~50°C
Sensor:	No
Installation:	3-4m

SPECIFICATIONS

SOLAR GARDEN LIGHT-ORIGINAL DESIGN-TB03



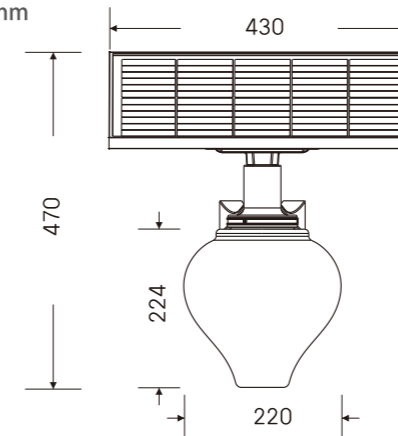
Model:TB03

Optical Parameters

LED rated power (max):	25W
Efficiency:	140 lm/W
CCT:	3000-6500K
CRI:	≥70
Beam angle:	90°
IP Rating:	IP65

Structural Parameters

Unit:mm



Solar Panel Parameters

Nominal power:	28W
Voltage at Pmax (vmp):	5V
Current at Pmax (Imp):	5.60A

Energy Storage Parameters

Battery type:	Lifepo4
Nominal capacity:	24Ah
Nominal voltage:	3.2V

Other Parameters

Storage temperature:	-20°C~60°C
Operation temperature:	-20°C~50°C
Sensor:	No
Installation:	5-6m

HIGHLIGHT

PLUG&PLAY HIGH CAPACITY ENERGY BOX

Integrated Battery&Controller design with pole-hug bracket makes installation and maintenance easier and more cost-saving.



COMPLETE ALUMINUM FRAME STRUCTURE

High strength, light weight, excellent heat dissipation.



ANTI-CORROSION

No corrosion in normal environment.
Can customize higher anti-corrosion suit in some special area such as seaside.



ANTI TYPHOON UP-TO LEVEL 16

Creative strong structure provides exceptional wind resistance.



LITHIUM BATTERY PACK WITH BMS

High capacity Lithium Battery Pack with battery management system.
Extreme low temperature battery is available.



SAFETY

Lowest risk of failure or fire.
MSDS & UN38.3 approved.



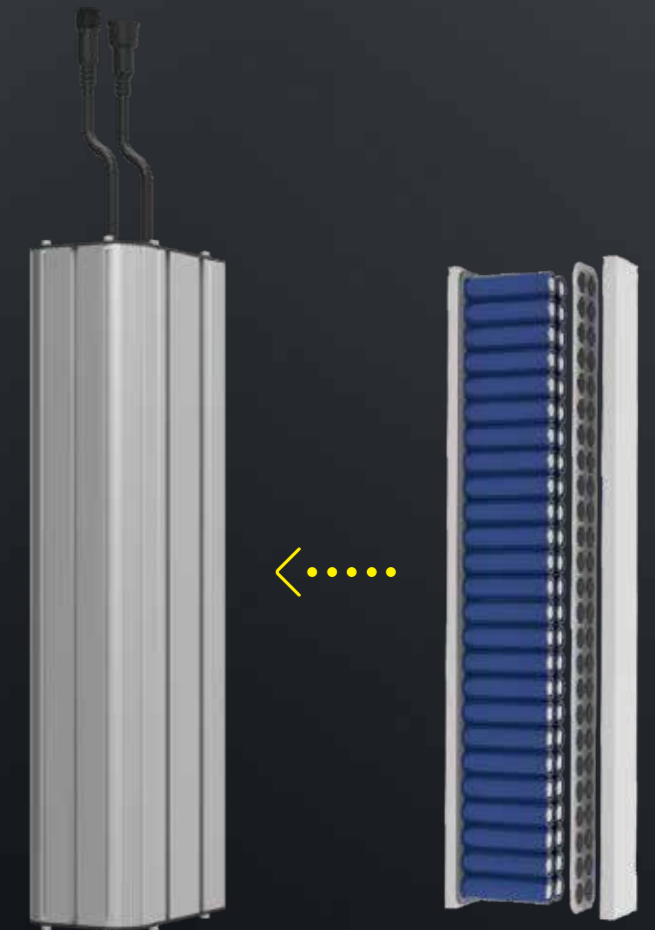
LONGER LIFETIME

5 years warranty. Minimum 8 years lifetime.
Prolonged 6000 cycles.



IP65

The battery pack is well-protected in strong aluminum battery box.
Water proof and dust proof.



SPECIFICATIONS

PLUG&PLAY HIGH CAPACITY ENERGY BOX



Model:Energy Box 500

Structural Parameters

Housing Material: Aluminum

Energy Storage Parameters

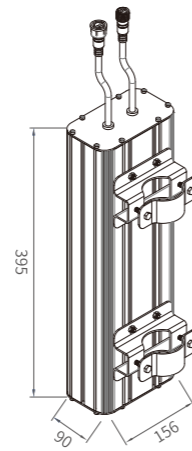
Size: 395*156*90MM
 Battery Type: LifePo4
 Battery Capacity: 500WH
 Battery Voltage: 12.8V

Other Parameters

BMS: YES
 Cycle: 2000+
 In-build Controller: Customized
 IP Rating: IP67

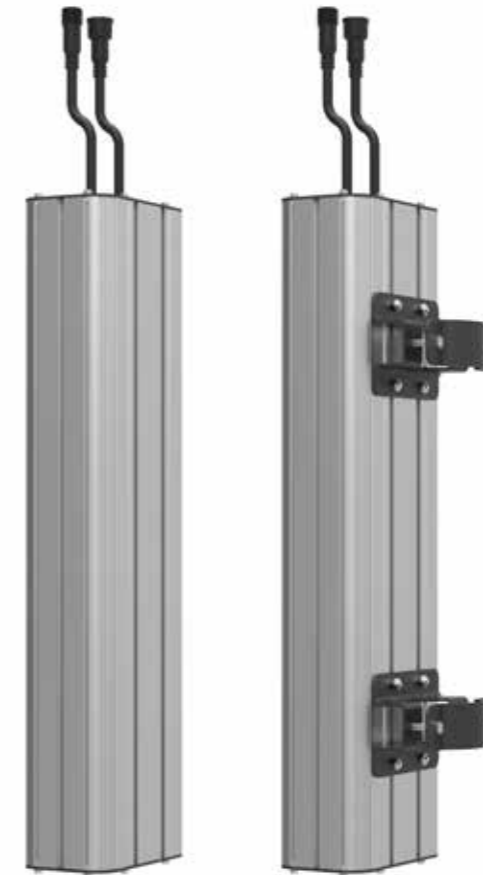
Structural Parameters

Unit: mm



SPECIFICATIONS

PLUG&PLAY HIGH CAPACITY ENERGY BOX



Model:Energy Box 1000

Structural Parameters

Housing Material: Aluminum

Energy Storage Parameters

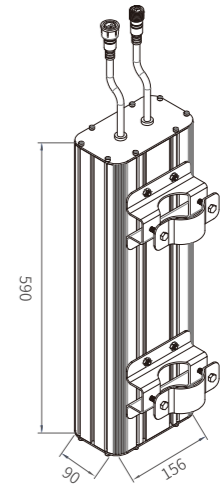
Size: 590*156*90MM
 Battery Type: LifePo4
 Battery Capacity: 1000WH
 Battery Voltage: 12.8V

Other Parameters

BMS: YES
 Cycle: 2000+
 In-build Controller: Customized
 IP Rating: IP67

Structural Parameters

Unit: mm



HIGHLIGHT

PREMIUM ALL-IN-ONE SOLAR LIGHTING SOLUTION

LED+PV+Battery are all in one piece with intelligent control system to optimize its maintenance, installation and daily operation.



HIGH EFFICIENT SOLAR PANEL

Maximum power generation

100% Solar Power. Sustainable off-grid energy



SUPREME QUALITY LED MODULE

LED modules utilize super high luminous efficiency Philips 5050 LED up to 150lm/W. Creative and elegant low glare lens distribute the light evenly and smoothly.



HIGH EFFICIENT MONO SILICONE SOLAR PANEL

Class A high efficiency Mono silicone solar module. Up to 18%. Strong performance ensures sufficient power for light.



PIR SENSOR OPTIONAL

PIR sensor detects human movement and provides high brightness when it is needed.



LITHIUM BATTERY PACK WITH BMS

High capacity Lithium Battery Pack with battery management system. Extreme low temperature battery is available.



PATENTED PRESSURE - REGULATING DEVICE

The pressure and heat in the battery box is managed by this valve to optimize the battery operating environment and the lifetime.



ADC12 ALUMINUM HOUSING

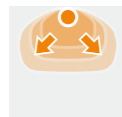
Ik10 impact resistance, excellent heat dissipation, strong anti-corrosion, elegant appearance, anti-typhoon up to level 16.

PUBLIC SOLAR LIGHTING SYSTEM

STREET LIGHT | SIDEWALK & BIKE LANE LIGHT

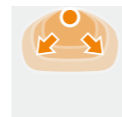
PUBLIC SOLAR LIGHTING SYSTEM

STREET LIGHT | SIDEWALK & BIKE LANE LIGHT



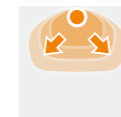
Basic Parameters

Model: LY17-20W
 LED rated power (max): 20W
 Efficiency: 180 lm/W
 PV Module: 30W 5V Poly
 Battery: LifePO4
 Battery Capacity: 46.4Ah 3.2V
 Product Size: 692X372X143MM



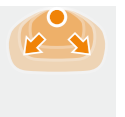
Basic Parameters

Model: LY17-30W
 LED rated power (max): 30W
 Efficiency: 180 lm/W
 PV Module: 40W 18V Mono
 Battery: LifePO4
 Battery Capacity: 18Ah 12.8V
 Product Size: 692X372X143MM



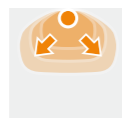
Basic Parameters

Model: LY17-100W
 LED rated power (max): 100W
 Efficiency: 180 lm/W
 PV Module: 100W 18V Mono
 Battery: LifePO4
 Battery Capacity: 24Ah 25.6V
 Product Size: 1029X530X143MM



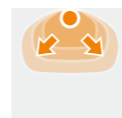
Basic Parameters

Model: LY17-120W
 LED rated power (max): 120W
 Efficiency: 180 lm/W
 PV Module: 120W 36V Mono
 Battery: LifePO4
 Battery Capacity: 30Ah 25.6V
 Product Size: 1335X530X143MM



Basic Parameters

Model: LY17-50W
 LED rated power (max): 50W
 Efficiency: 180 lm/W
 PV Module: 60W 18V Poly
 Battery: LifePO4
 Battery Capacity: 27Ah 12.8V
 Product Size: 713X530X143MM



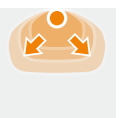
Basic Parameters

Model: LY17-80W
 LED rated power (max): 80W
 Efficiency: 180 lm/W
 PV Module: 80W 18V Poly
 Battery: LifePO4
 Battery Capacity: 36Ah 12.8V
 Product Size: 1029X530X143MM



Basic Parameters

Model: LY17-150W
 LED rated power (max): 150W
 Efficiency: 180 lm/W
 PV Module: 160W 36V Mono
 Battery: LifePO4
 Battery Capacity: 36Ah 25.6V
 Product Size: 1260X692X143MM



Basic Parameters

Model: LY17-180W
 LED rated power (max): 180W
 Efficiency: 180 lm/W
 PV Module: 200W 36V Mono
 Battery: LifePO4
 Battery Capacity: 42Ah 25.6V
 Product Size: 1501X692X143MM

HIGHLIGHT

HIGH EFFICIENT SOLAR PANEL

Maximum power generation

100% Solar Power.Sustainable off-grid energy.



ORIGINAL INTEGRATED DESIGN

LED, solar and battery are all in one unit. Easy installation.

HIGH EFFICIENT PHOTOVOLTAIC MODULE

High conversion efficiency due to top quality wafers and advanced cell technology.

HIGH TOUGHNESS TEMPERED GLASS

High transparent self-clean tempered glass to increase the light adoption and effectively reduce the power loss which is caused by dust.

SUPERIOR WEAK SUN PERFORMANCE

Advanced glass and solar cell surface texturing allow for excellent performance in low-light environments.

HIGH LUMINOUS EFFICIENCY LED MODULE

Creative modular design and exceptional heat dissipation

Combined with the outstanding heat dissipation design, the pure aluminum lamp base with sealed lens makes the lighting more effective and aids in prolonged life span of the LED.



Using Samsung
2835 LEDs



Prolong Lifetime
>50000 hours



-20°C-60°C Operating
Temperature



Fast cool-down
Quality aluminum
PCB+Aluminum
Housing



SPECIFICATIONS

SEMI INTEGRATED SERIES-15W/20W



Model:LY14A/B

Optical Parameters

LED rated power (max):	15/20W
Efficiency:	180 lm/W
CCT:	3000-6500K
CRI:	≥80
Beam angle:	50°x140° / 70°x140°(Optional)
IP Rating:	IP65

Structural Parameters

PVsize:	510x445x30mm
Product size:	510x445x406mm
Front side glass:	3.2mm transparent anti-reflection coating tempered glass
material:	Aluminum

Solar Panel Parameters

Nominal power:	40W/50W
Voltage at Pmax (vmp):	18V
Current at Pmax (Imp):	2.22A/2.77A

Energy Storage Parameters

Battery type:	LifePo4
Nominal capacity:	16.5Ah/18Ah
Nominal voltage:	12.8V

Other Parameters

Storage temperature:	-20°C~60°C
Operation temperature:	0°C~50°C
Sensor:	No
Height of installation:	4~5m
Diameter of pole:	45-60mm

SPECIFICATIONS

SEMI INTEGRATED SERIES-30W



Model:LY14C

Optical Parameters

LED rated power (max):	30W
Efficiency:	180 lm/W
CCT:	3000-6500K
CRI:	≥80
Beam angle:	50°x140° / 70°x140°(Optional)
IP Rating:	IP65

Structural Parameters

PVsize:	510x695x30mm
Product size:	510x695x406mm
Front side glass:	3.2mm transparent anti-reflection coating tempered glass
material:	Aluminum

Solar Panel Parameters

Nominal power:	60W
Voltage at Pmax (vmp):	18V
Current at Pmax (Imp):	3.33A

Energy Storage Parameters

Battery type:	LifePo4
Nominal capacity:	30Ah
Nominal voltage:	12.8V

Other Parameters

Storage temperature:	-20°C~60°C
Operation temperature:	0°C~50°C
Sensor:	No
Height of installation:	5~6m
Diameter of pole:	45-60mm

SPECIFICATIONS

SEMI INTEGRATED SERIES-45W



Model:LY14D

Optical Parameters

LED rated power (max):	45W
Efficiency:	180 lm/W
CCT:	3000-6500K
CRI:	≥80
Beam angle:	50°x140° / 70°x140°(Optional)
IP Rating:	IP65

Structural Parameters

PVsize:	510x535x30mm
Product size:	510x1100x436mm
Front side glass:	3.2mm transparent anti-reflection coating tempered glass
material:	Aluminum

Solar Panel Parameters

Nominal power:	50Wx2
Voltage at Pmax (vmp):	18V
Current at Pmax (Imp):	5.55A

Energy Storage Parameters

Battery type:	LifePo4
Nominal capacity:	48Ah
Nominal voltage:	12.8V

Other Parameters

Storage temperature:	-20°C~60°C
Operation temperature:	0°C~50°C
Sensor:	No
Height of installation:	6~8m
Diameter of pole:	60mm

SPECIFICATIONS

SEMI INTEGRATED SERIES-60W



Model:LY14C

Optical Parameters

LED rated power (max):	60W
Efficiency:	180 lm/W
CCT:	3000-6500K
CRI:	≥80
Beam angle:	50°x140° / 70°x140°(Optional)
IP Rating:	IP65

Structural Parameters

PVsize:	510x695x30mm
Product size:	594x1420x436mm
Front side glass:	3.2mm transparent anti-reflection coating tempered glass
material:	Aluminum

Solar Panel Parameters

Nominal power:	60Wx2
Voltage at Pmax (vmp):	18V
Current at Pmax (Imp):	6.66A

Energy Storage Parameters

Battery type:	LifePo4
Nominal capacity:	60Ah
Nominal voltage:	12.8V

Other Parameters

Storage temperature:	-20°C~60°C
Operation temperature:	0°C~50°C
Sensor:	No
Height of installation:	6~8m
Diameter of pole:	60mm

PROJECT CASES

URBAN ROAD LIGHTING



URBAN ROAD LIGHTING

Professional solar lighting solution for mainroad, sidewalk or intersection where need precise light distribution and high lux level.



PROJECT CASES
URBAN ROAD LIGHTING



PROJECT CASES
URBAN ROAD LIGHTING



PROJECT CASES

RURAL ROAD LIGHTING



RURAL ROAD LIGHTING

Ideal off-grid public lighting solution for rural area.
Low glare lighting unit with motion sensor is recommended.



PROJECT CASES

LANDSCAPE LIGHTING



LANDSCAPE LIGHTING

Green energy lights up green area.
4000K daylight lighting brings vivid color to public park or private garden at night.

